

10-EN-1075-1

SEGMENTED DISTRIBUTORS ARE THE IDEAL SOLUTION FOR GREASE LUBRICATION APPLICATIONS THAT REQUIRE SMALL AND ACCURATELY DISPENSED QUANTITIES OF LUBRICANT WITH A COMPACT AND SOLID DESIGN. THE LUBRICATION CYCLE CAN BE CONTROLLED BY A SINGLE SENSOR MOUNTED ON ONE OF THE DIVIDER ELEMENTS.

" FULL RANGE OF PRESSURE AND SPOOL MONITORING ACCESSORIES ARE INTERCHANGEABLE WITH SVM-21D DISTRIBUTORS."



LUBERR Pvt Ltd

No : 203, Nageswara Rao Road 2nd Extension,
Athipet, Ambattur, Chennai, Tamilnadu,
India - 600058



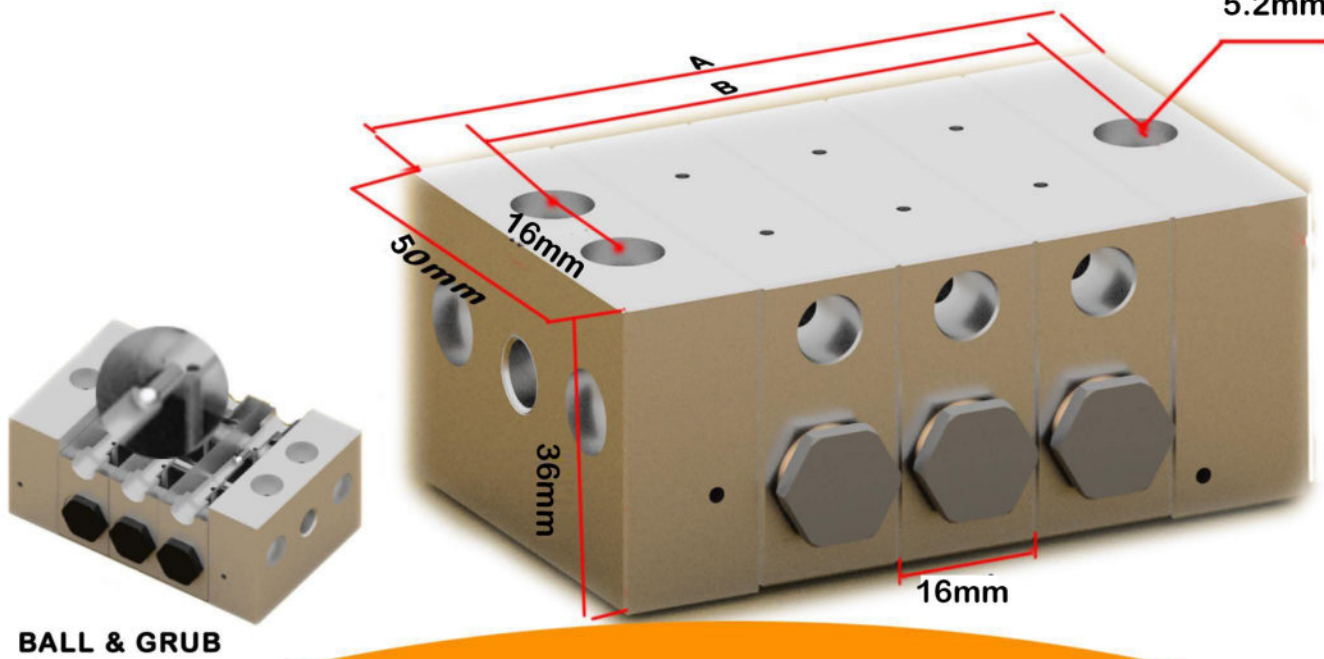
www.luberr.in

SEGMENTED PROGRESSIVE DISTRIBUTORS

DIMENSIONAL DETAILS

AVAILABLE IN: CARBON STEEL

5.2mm DIA



S
V
M
-
2
3
M

TECHNICAL SPECIFICATION:

MODEL NO: SVM-23M
INPUT THREAD: M10X1
OUTPUT THREAD: M10X1
MAXIMUM GREASE COMPATABILITY: NLGI-2
MAXIMUM WORKING PRESSURE: 400BAR

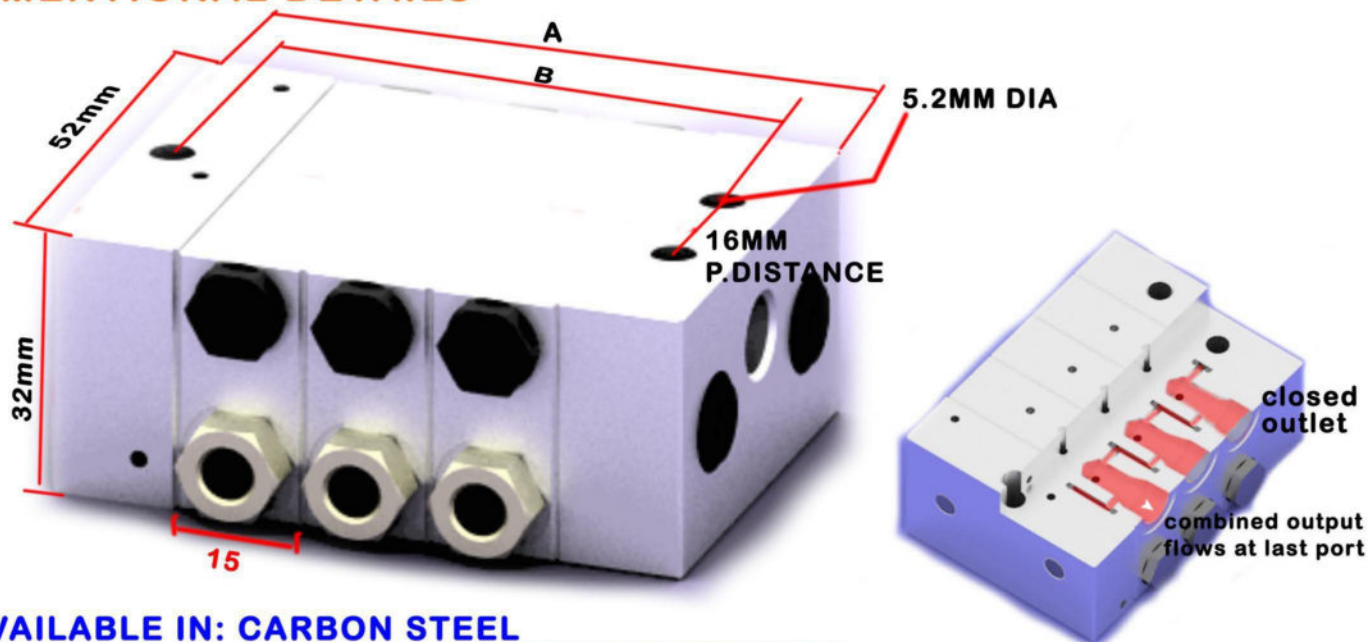
OUTPUT	PART NAME
0.05 CC	SA664
0.08 CC	SA665
0.12 CC	SA666
0.22 CC	SA667
0.32 CC	SA668

FEATURES:

IT HAS A INTERNAL BALL AND GRUB
SCREW ARRANGED FOR OUTPUT COMBINATION.



DIMENSIONAL DETAILS



S
V
M
-
2
3
L

AVAILABLE IN: CARBON STEEL

TECHNICAL SPECIFICATION

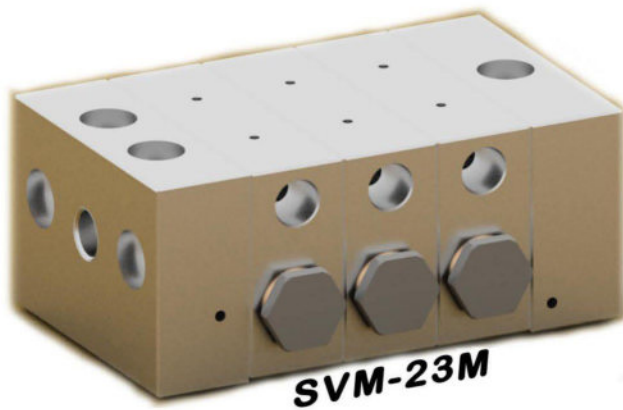
MODEL NO: SVM-23L
 INPUT THREAD: M10X1
 OUTPUT THREAD: M10X1
 MAXIMUM GREASE COMPATABILITY: NLGI-2
 MAXIMUM WORKING PRESSURE: 400BAR
 OUTPUT VARIANTS: 0.1CC/stroke=SA669, 0.07CC/stroke= SA670, 0.05CC= SA671
 OPTIONAL TYPES: BARE TYPE/ CYCLE INDICATOR / PROXIMITY SWITCH TYPE

NUMBER OF WAYS	A (mm)	B (mm)
6	75	63
8	90	78
10	105	93
12	120	108
14	135	123
16	150	138
18	165	153

FEATURES:

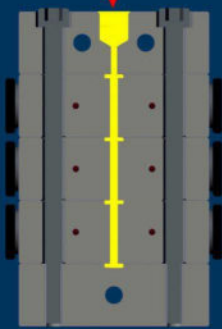
VERTICAL PORTING OF THE OUTLET
 CAN BE DONE IN THIS MODEL



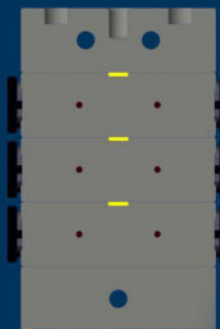


GENERAL WORKING FOR THE SEGMENTED DISTRIBUTOR

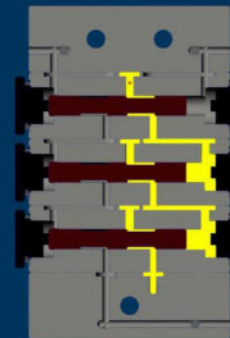
A



B



C



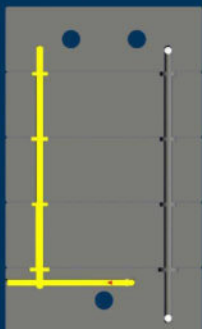
IN THIS PROCESS
THE LUBE FIRST ENTERS
INTO THE INLET
AND THEN PASS THROUGH
THE HOLE PASSAGE
TILL THE END

IN THIS PROCESS
THE LUBE FILLS INTO THE
HOLE SLOTS IN BETWEEN
THE SEGMENTS AND
FLUSHES INTO THE PLUNGER
BORE HOLES.

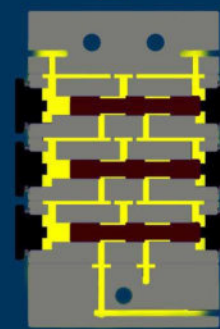
IN THIS PROCESS
THE LUBE FILLS INTO THE
PLUNGER BORES.

FOR SVM-23L THE OUTPUT IS
PORTED VERTICALLY SHOWN IN SPEC SHEET

D



E



F



IN THIS PROCESS
THE LUBE PASSTHROUGH
THE SIDE HOLES AND
FLUSHES TO THE ABOVE
SEGMENTS AND FILLS
THE SLOTTED HOLES.

IN THIS PROCESS
THE LUBE STARTS TO
FILL IN THE DISTRIBUTOR
COMPLETELY AND
IT WILL LEAD TO PUSH THE
PLUNGERS

IN THIS PROCESS
THE DISTRIBUTOR STARTS
TO PROVIDE THE
OUTPUTS ACCORDING
TO THE CC OF THE
MIDDLE SEGMENT
BORE DIAMETER

BALL

GRUB

TO SEPERATE
THE OUTPUTS
FOR SVM-23 R
HORIZONTALLY
PORTED

10-EN-1075-1